

DIGITAL VOICE RECORDER

PAPYRUS-Micro

PAPYRUS-Micro Titan

CONTENTS

INTRODUCTION.....	3
1 DESCRIPTION AND USE.....	4
1.1 Purpose.....	4
1.2 Technical characteristics.....	4
1.3 Package contents.....	5
1.4 Appearance and functions.....	6
1.5 Operating Instructions.....	8
1.6 Computer requirements.....	8
2 PREPARATION PROCEDURES AND OPERATION ORDER.....	9
2.1 Battery Charging.....	9
2.2 Software installation.....	9
2.3 Device connection to the PC.....	15
2.4 Launch the “Papyrus Tool” software.....	15
2.5 Description of the “Papyrus Tool” software.....	16
2.6 The recording settings.....	20
2.7 Setting up clock and timer.....	22
2.8 Setting up a PIN-code.....	26
2.9 Memory testing.....	34
2.10 Downloading and playback of audio files.....	35
2.11 Recorded data deleting.....	40
2.12 Restore of deleted data.....	41
2.13 Using the device.....	41
3 TROUBLESHOOTING.....	43
4 TECHNICAL SERVICE.....	44
5 STORAGE AND MAINTENANCE.....	45
6 TRANSPORTATION REGULATIONS.....	46
7 UTILIZATION.....	47
8 PRODUCT LIFETIME AND MANUFACTURER’S WARRANTY.....	48

INTRODUCTION

It is essential to familiarize yourself with this user manual (UM) before turning on the digital voice recorder PAPYRUS-Micro and PAPYRUS-Micro Titan (referred as the device below).

Observe all precaution measures when using the device.

Check the content according to the part 1.3 of UM before use.

1 DESCRIPTION AND USE

1.1 Purpose

1.1.1 The digital voice recorder PAPYRUS-Micro (PAPYRUS-Micro Titan) (referred as the device below) is the professional audio recording device intended for high quality recording of audio information in a noisy environment.

1.1.2 The meetings, talks, interviews and other indoor and outdoor activities can be audio recorded using the device with built-in microphone. The voice can be recorded from the distances of up to 5 meters indoor and 1-2 meters outdoor in the city environment using built-in microphone.

1.2 Technical characteristics

1.2.1 Technical characteristics of the device are given in Table 1.







Table 1

Parameter	Value	
Internal memory, Gb	2	4
Sampling rate, kHz	32/16	
Recording time under 32 kHz sample rate, h	9	19
Recording time under 16 kHz sample rate, h	19	38
ADC resolution, bit	12	
Dynamic range, dB	82	
Power supply	Built-in Li-PO battery 125 mA·h	
Current consumption in power off mode, mA	not more than 0,10	
Standby current consumption in voice activated recording mode, mA	not more than 0,35	
Current consumption in recording mode (under fully charged battery), mA	not more than 6	
Continuous recording time from fully charged battery, h	not less than 20	
Transfer time of full volume of audio information to the computer's hard drive, h	not more than 0,6	
Dimensions, mm	37x22x8	
Temperature range, °C	from 0 to plus 50	

1.3 Package contents

1.3.1 The package contents of the device is given in Table 2.

Table 2

Name	Number	Appearance
Digital voice recorder “Papyrus-micro”/ “Papyrus- micro TITANIUM”	1 pc.	
USB - USB micro cable	1 pc.	
Charger (220 V)	1 pc.	
Vehicle charger 12 V	1 pc.	
USB flash drive with special software (“Papyrus Tool”)	1 pc.	
Case with compartments	1 pc.	
User manual	1 pc.	-
Certificate	1 pc.	-

1.4 Appearance and functions

1.4.1 The device has compact and user-friendly design.

The device has exceptionally user-friendly interface and does not require any prior training before use. Only basic skills of working with programs in Windows operation system are required.

Audio information is recorded into the internal memory, making the device “invisible” for kinematic voice recorder detectors.

The voice recording in noisy environment is possible due to high dynamic range of recorded signals.

1.4.2 A special software “Papyrus Tool” must be installed on the computer before using the device (see part 2.2 of UM). The flash drive with special software is included in the package (see Table 2).

When the device is connected to the computer (see part 2.3 of UM), the user may change settings of recording quality, voice activation settings (recording is automatically started when a preset acoustic level is exceeded – Voice Activation System “VOX”), settings for protection from unauthorized access to information.

The audio recordings can be listened to only after the device has been connected to the computer and files with extension “wav” have been downloaded from the internal memory of the device to the hard drive of the computer.

1.4.3 The device has built-in microphone, LED indicator, device operation control button, recording control slide switch and micro USB port.

The appearance of the device is presented on Picture 1.



Picture 1 – The appearance of the device

The control button and LED indicator on the top panel of the device are used to control the operation mode of the device.

Micro USB port, built-in microphone and slide switch are situated on the side panels of the device.

The various operation modes of the device and the corresponding colors of the LED indicator are given in Table 3.

Table 3

The device mode	LED indicator signal and color	
The device is not connected to computer/charger	<i>When the control button is pressed (Pic. 1)</i>	
	Blinking: recording is in progress	Shining: recording is stopped
	Green color: Battery is 100% full	Red color: Battery level is 25% or less level
The device is connected to computer/charger	<i>When the control button is not pressed (Pic. 1)</i>	
	Blinking: recording is in progress	Shining: recording is stopped
	Green color: Battery is 100% full	Red color: Battery is being charged from USB port

1.5 Operating Instructions

1.5.1 ATTENTION! *If an incorrect PIN code is entered three times in a row, all audio files will be automatically deleted from the device memory.*

1.5.2 It is strongly prohibited to disassemble the device to avoid its break down.

1.5.3 Protect the device from mechanical damage, moisture, temperature difference, direct sunlight.

1.5.4 Do not use physical force while disconnecting the USB-cable from the device.

1.5.5 Avoid overheating of the device (over 80° C) – this may cause battery inflammation or explosion.

1.5.6 The product is designed for use in normal environmental conditions (temperature range from 0°C to +50°C; relative air humidity from 30 to 80 %; atmospheric pressure from 645 to 795 mm mercury).

1.5.7 The built-in battery should be charged periodically while the Product is in use. The battery should be charged at least once for half a year even if the Product was not in use.

1.6 Computer requirements

1.6.1 The computer with the equal or higher parameters must be used with the device:

- operation al system: Windows XP SP3, Windows Vista, Windows 7;
- free space on the hard drive of not less than 16 Gb;
- USB 2.0 (1.1) port;
- audio card.

2 PREPARATION PROCEDURES AND OPERATION ORDER

2.1 Battery Charging

2.1.1 The internal battery of the device can either be charged via the USB port of the computer or the mains line of 220 V using charger included in the set or by use of vehicle electrical network (12V). The color of battery LED indicator (Picture 1) changes from red to green (battery is charged) throughout the charging process. The total charging time is no longer than two hours.

2.1.2 For built-in battery charging from USB port the PC connect the device as given in part 2.3 of UM.

2.1.3 For built-in battery charging from 220 V mains line connect the micro USB - USB cable from the set to the micro-USB port of the device (Picture 1) and to the USB port of mains connected Charger.

2.1.4 For built-in battery charging from a vehicle electrical network connect the micro USB - USB cable from the set to the micro-USB port of the device (Picture 1) and to the USB port of the Vehicle charger 12 V connected to the vehicle electrical network.

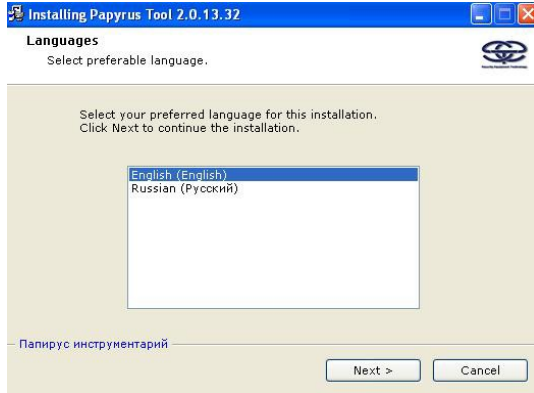
2.2 Software installation

2.2.1 Place USB flash drive with special software ("Papyrus Tool") from the package (Table 2) to USB port of the PC. Launch "setup.exe" file located on the USB flash drive for "Papyrus Tool" software installation.

ATTENTION! Disconnect the device from the computer before "Papyrus Tool" installation.

ATTENTION! *The “Papyrus Tool” software must be installed with administrator rights.*

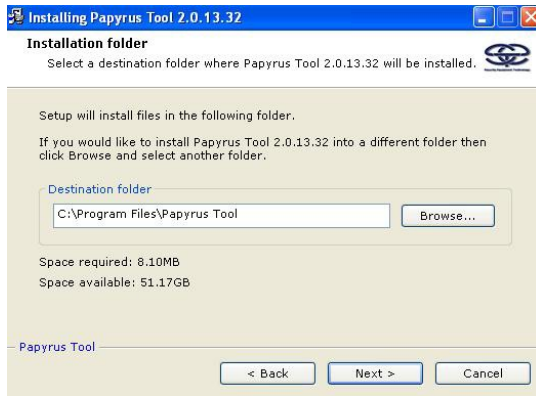
2.2.2 Select the language of the software interface from the language selection window and follow the directions to install software (Pictures 2 – 5).



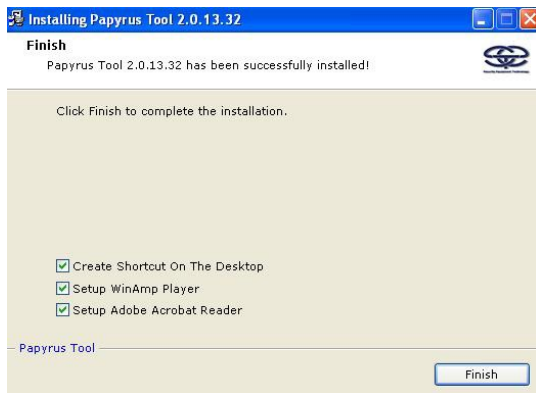
Picture 2



Picture 3



Picture 4

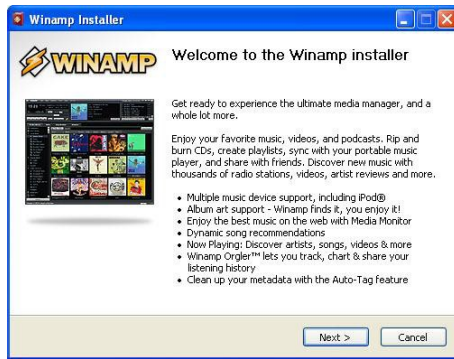


Picture 5

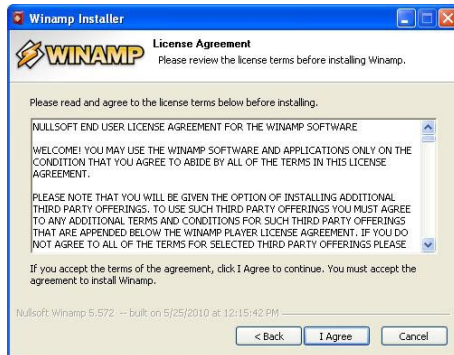
2.2.3 The programs “WinAMP” and “Adobe Reader” are necessary for the “Papyrus Tool” software to function correctly. The installation of these programs will be suggested automatically by the installation wizard.

If these two programs have been installed previously, the installation process of the “Papyrus Tool” software should be finished.

Follow the installation instructions to install “WinAMP” and “Adobe Reader” programs (Pictures 6 – 15).



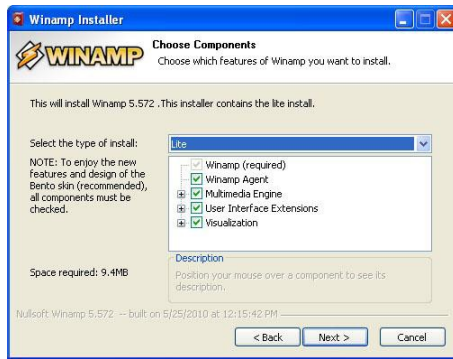
Picture 6



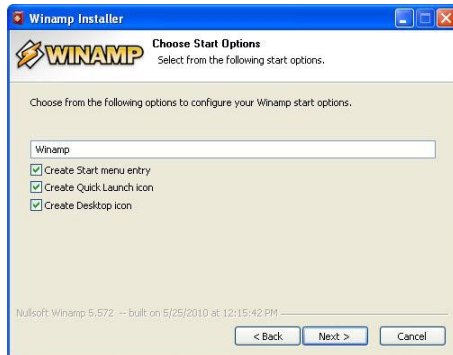
Picture 7



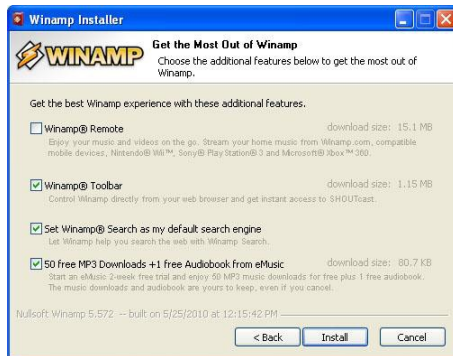
Picture 8



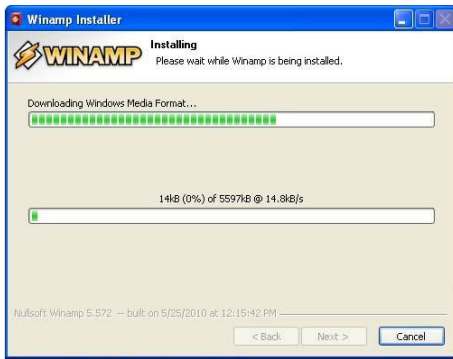
Picture 9



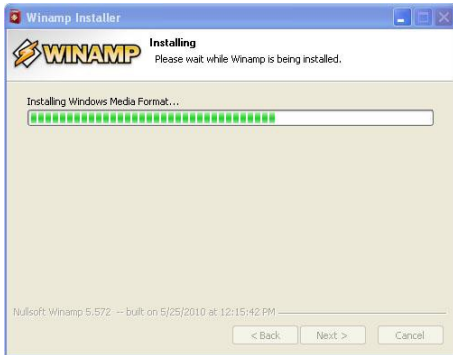
Picture 10



Picture 11



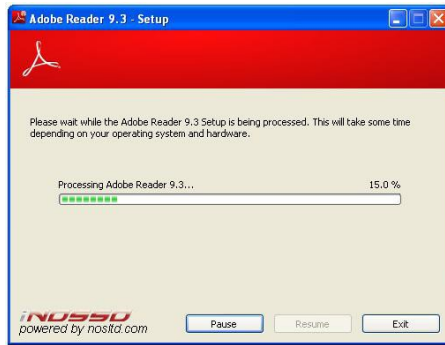
Picture 12



Picture 13



Picture 14



Picture 15

2.3 Device connection to the PC

2.3.1 Connect the micro USB - USB cable from the set to the micro USB port of the device (Picture 1) and to the USB port of the computer.

2.4 Launch the “Papyrus Tool” software

2.4.1 Turn on the power of the computer and wait until the operation system is loaded.

2.4.2 Connect the device to the PC (following instructions from part 2.3 of this manual).

ATTENTION! During the first connection of the device to the computer wait for the message from the computer that the voice recorder is detected. If the message does not appear, wait several minutes.

2.4.3 Press the “Start” button and select “Programs → Papyrus Tool → Papyrus Tool”.

2.5 Description of the “Papyrus Tool” software

2.5.1 Software window

2.5.1.1 The appearance of the software window is shown on the Picture 16.

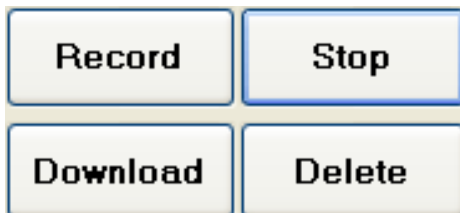


Picture 16 - Appearance of the “Papyrus Tool” software window

2.5.2 Control panel

2.5.2.1 The control buttons of the device are located on the control panel (Picture 17):

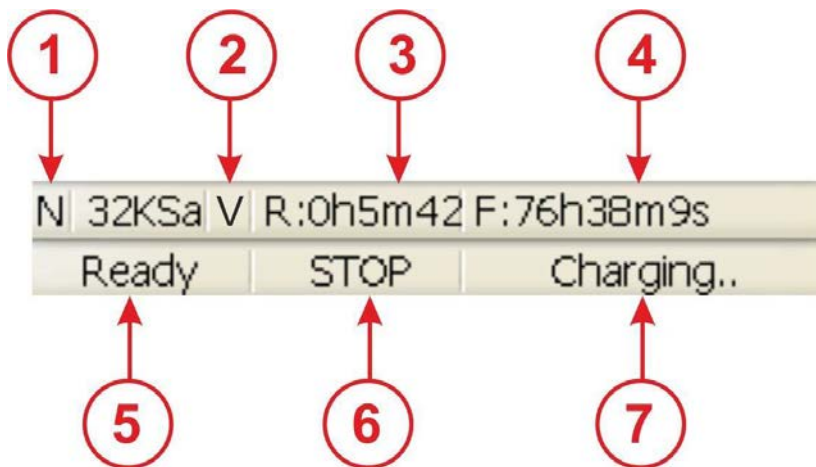
- «Record» – begin recording;
- «Stop» – stop recording;
- «Download» – download information to the computer;
- «Delete» – delete from the device memory.



Picture 17 - Control panel

2.5.3 Status bar

2.5.3.1 The operation mode of the device is displayed on the status bar (Picture 18):



Picture 18 - Status bar

1) “N/L” – recording mode indicator:

- “N” – «Normal» mode: recording stops after the memory of the device is full;
- “L” – «Continuous loop» mode: recording continues in cycle until timer stops the recording or until the battery runs out.

2) «V/_» - «VOX» mode indicator:

- «V»- the device is in «VOX» mode;
- «_» - «VOX» mode is disabled.

3) R:<h>.<min>.<sec> – duration of recorded audio information.

4) F:<h>.<min>.<sec> – remaining time available for the recording.

5) «Ready/Busy» – status indicator of the device:

- «Ready» - the device is ready for use;
- «Busy» - the device is busy.

6) «RECORD/PAUSE/STOP/READ/DELETE/WAIT/ERROR/FORMAT» - recording process indicator:

- «RECORD» - recording is ongoing;
- «PAUSE» - recording is paused during «VOX» mode;
- «STOP» - recording is stopped;
- «READ» - recorded data downloading;
- «DELETE» - deleting of the recorded data;
- «WAIT» - settings updating;
- «ERROR» - error;
- «FORMAT» - hard drive formatting.

7) «Charging../Charged» – battery charging process indicator:

- «Charging..» - battery is under charging;
- «Charged» - battery is fully charged.

2.5.4 *Main menu of the software*

2.5.4.1 The main menu of the software contains the following instructions:

- to open and play back audio files (“File” tab) (Picture 19), downloaded to the hard drive of computer using “Download” button (Picture 16);



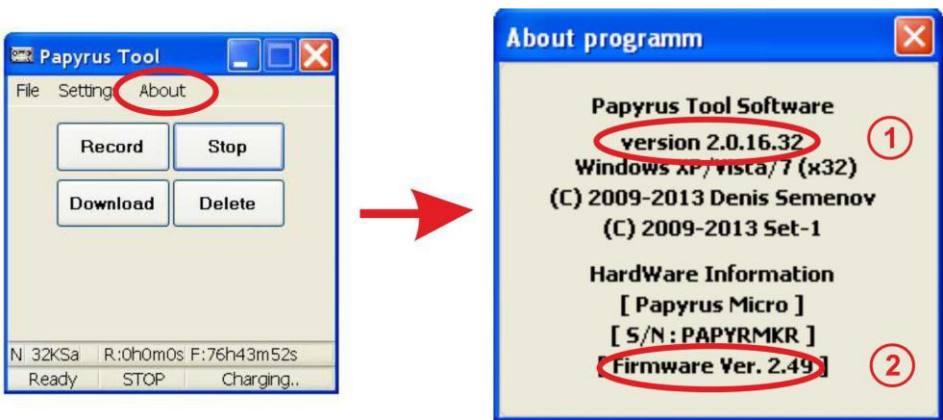
Picture 19 – “File” tab

- to control the device settings (“Settings” tab) (Picture 20);



Picture 20 – “Settings” tab

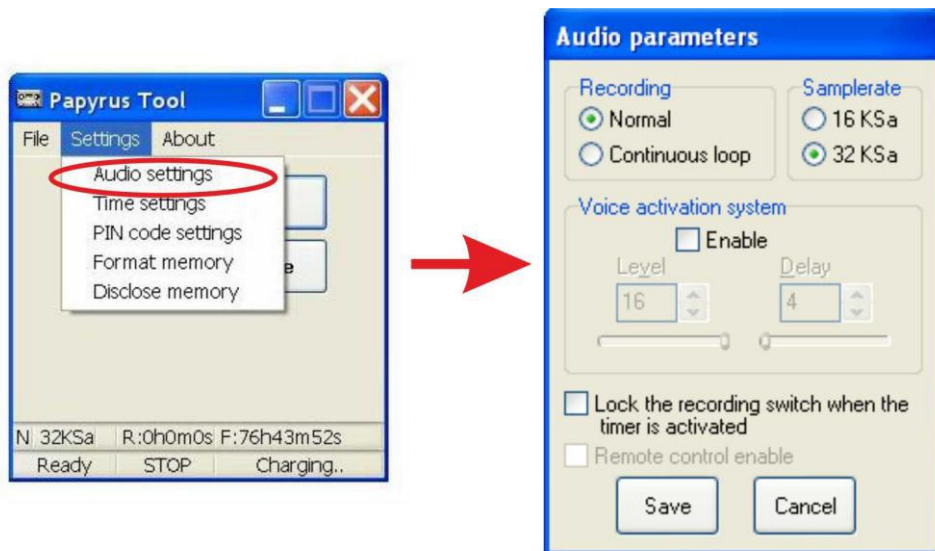
- to open the help windows for program (Picture 21, item 1) and device (Picture 21, item 2) - "About" tab. The location of the “About” tab is shown on Picture 21.



Picture 21 – Location of “About” tab

2.6 The recording settings

2.6.1 Choose the “Audio settings” from the “Settings” tab in the main menu to setup the recording settings. The window “Audio parameters” appears when the “Audio settings” option is selected. The appearance of the window “Audio parameters” is shown on Picture 22.



Picture 22 - Window «Audio parameters»

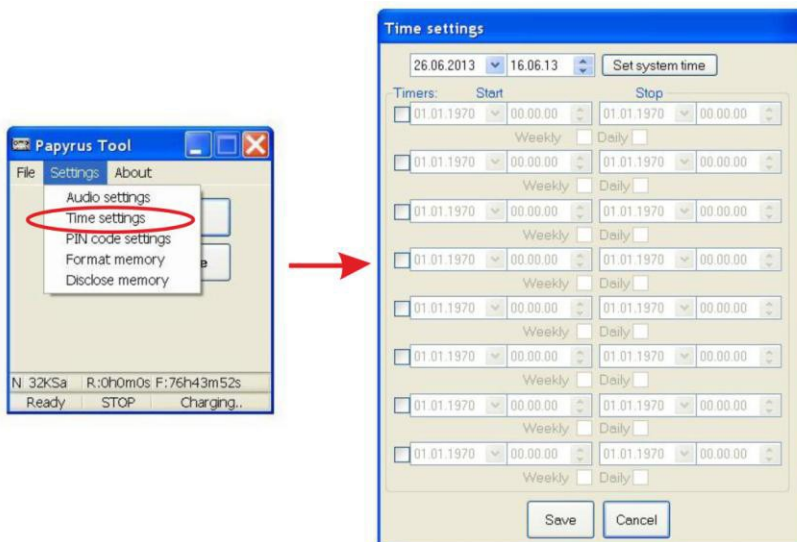
2.6.2 The description of parameters from the “Audio parameters” window is given in Table 4.

Table 4

Console	Indicator	Function	Meaning
Recording	Normal	Recording mode selection	Recording stops when the memory is full
	Continuous loop		“Cyclic” recording mode – when the memory is full, recording continues by gradually overwriting the earlier recorded fragments
Samplerate	16 KSa	Audio sampling rate selection	16 KHz
	32 KSa		32 KHz
Voice activation system	Enable	Voice activation function	“VOX” is an indicator of voice activation function
	Level (1-16)		Level of the sound when the recorder activates recording (from 16 (low sensitivity) to 1 (high sensitivity) standard units)
	Delay (1-255)		Time delay in seconds for recording stoppage after the latest sound level threshold crossing
Lock the recording switch when the timer is activated	V	Locks recording control button	Lock the recording switch if at least one of the preset recording timer is activated.
Remote control enabled	Function is not available in this model of the recorder	Remote control Unit usage	For Papyrus-micro and Papyrus-micro Titan function is not available
Save	Closes “Audio parameters” windows and saves chosen recording parameters		
Cancel	Closes “Audio parameters” window without saving of chosen recording parameters		

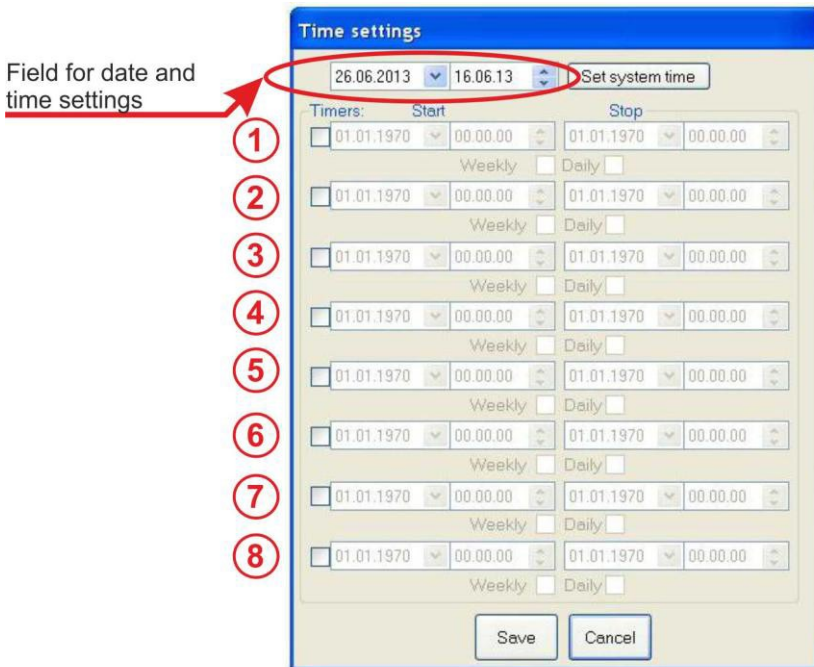
2.7 Setting up clock and timer

2.7.1 Select «Time settings» from the «Settings» tab from the main menu to set up clock and timer. The appearance of the window «Time settings» is shown on Picture 23.



Picture 23 -“Time settings” window

2.7.2 Press the “Set system time” button to set date and time from the computer. After pressing the button the field of date and time settings in the “Time settings” window (Picture 24) will have the same data as at the program running computer.



Picture 24

2.7.3 The program provides setting of up to eight independent timers (Picture 24).

To set up a timer:

- 1) Choose timer with a tick (Picture 25).
- 2) Choose date and time for the beginning of the recording. (Picture 26).
- 3) Choose date and time when recording should be stopped (Picture 27).
- 4) When “Every Week” is ticked (Picture 28) the recording will be turned on once a week (starting from the set up date) at the time preset on the timer. Recording will be turned off once a week (starting from set up date) at the time preset on the timer.

5) When “Every Day” is ticked (Picture 28) the recording will be turned on every day once a day at the time preset on the timer. Recording will be turned off every day once a day at the time preset on the stop recording timer.

ATTENTION! If “Every Week” and “Every Day” are not ticked the recording will be started and stopped at the preset date and time.

ATTENTION! If «Every Week»/«Every Day» is ticked the date and time of the timer will be automatically changed to one day/week ahead, after recording is complete.

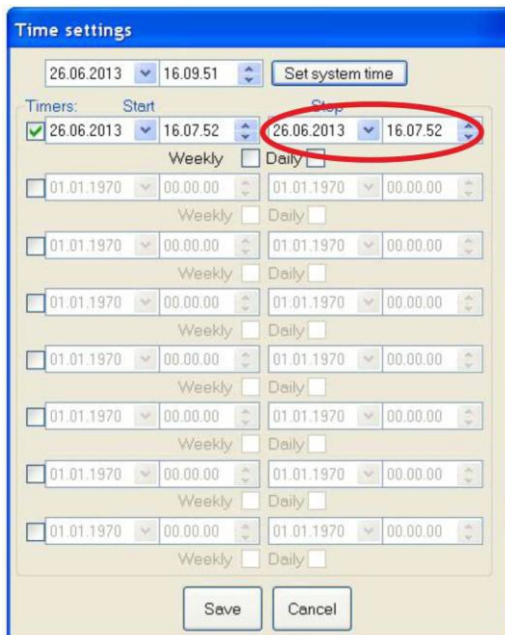
6) Save selected settings by pushing "Save" button, in case the settings are selected noncorrectly push "Cancel" button.



Picture 25

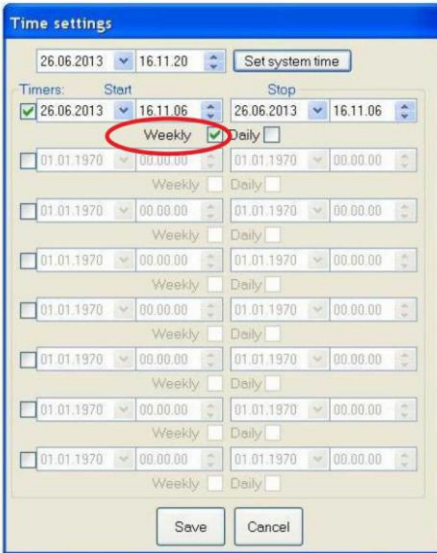


Picture 26



Picture 27

Once a week timed Recording
Start / Stop



Daily timed Recording
Start / Stop



Picture 28

2.8 Setting up a PIN-code

2.8.1 Set up a PIN-code to protect the data, saved on the recorder, from unauthorized downloading. The window with the PIN-code request will appear when the downloading of audio files from protected device is attempted.

ATTENTION! If a wrong PIN-code is entered three times in a row, all audio files will be automatically deleted from the device memory.

2.8.2 Setting up a PIN-code

1) Select “Pin code setting” from the “Settings” tab from the main menu. (Picture 29).



Picture 29

2) Enter a new four-digit PIN-code in the field “Enter four digits or 0000 to clear PIN” in the “Enter new PIN code” window (Picture 30), and confirm by pressing the “OK” button.

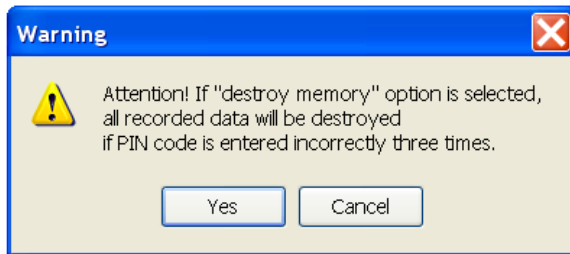


Picture 30

At this stage it is possible to set option to delete all data stored in the device memory without the future possibility of recovery, when wrong PIN-code is entered three times. The option can be selected by ticking the “Destroy memory” field (Picture 31). Press “Yes” button at the pop-up window «Warning» (Picture 32) to confirm your choice.



Picture 31



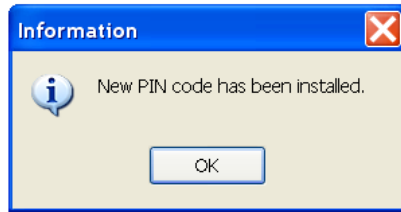
Picture 32

3) Confirm PIN-code by reentering of earlier entered PIN-code's four digits in the " Enter four digits or 0000 to clear PIN" field (Picture 33), and press "OK" button to finish. If the PIN-code is wrongly keyed in during PIN-code confirmation, software will prompt to select a new PIN-code and confirm it.



Picture 33

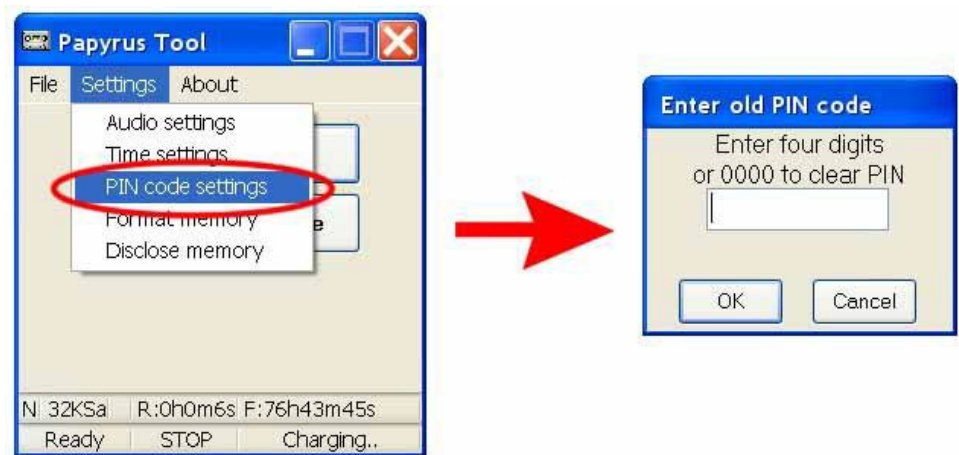
4) PIN-code confirmation window will appear (Picture 34). Press "OK" button to continue.



Picture 34

2.8.3 *PIN-code changing*

1) Select “Pin code setting” from the “Settings” tab from the main menu (Picture 35).



Picture 35

2) Enter old four-digit PIN-code in the field “Enter four digits or 0000 to clear PIN” of the “Enter old PIN code” window (Picture 36) and confirm by pressing the “OK” button.



Picture 36

3) Enter a new PIN-code (Picture 37) and confirm by pressing “OK” button.



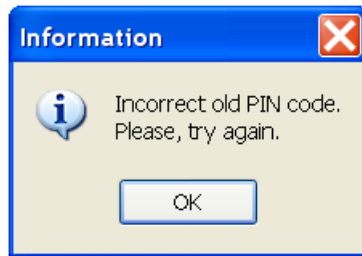
Picture 37

4) Confirm new PIN-code by entering 4 digits of new PIN-code in the field “Enter four digits or 0000 to clear PIN” (Picture 38), confirm by pressing “OK” button to finish the procedure.



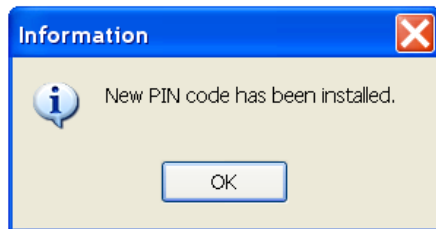
Picture 38

ATTENTION! *In case the previous PIN -code (Picture 36) is noncorrectly entered the program will notice a wrong PIN-code entering (Picture 39). If the previous PIN-code is noncorrectly entered 3 times in a row all the audio files will be deleted from the device memory.*



Picture 39

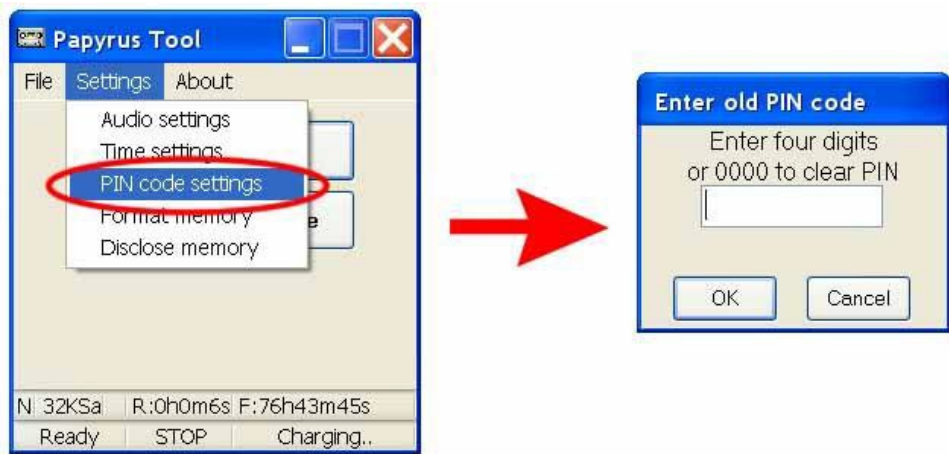
5) If the PIN-code was set up correctly information window will pop up (Picture 40). To continue press “OK”.



Picture 40

2.8.4 *PIN-code cancellation*

1) Select “PIN code settings” from the “Settings” tab in the main menu (Picture 41).



Picture 41

2) Enter old four digit PIN-code in “Enter four digits or 0000 to clear PIN” in the pop up window “Enter old PIN code” (Picture 42), then press “OK” button to confirm.



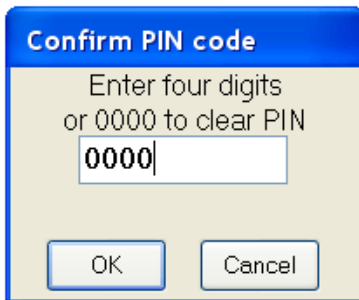
Picture 42

3) Key in four zeros in the “Enter four digits or 0000 to clear PIN” field (window “Enter new PIN code”) (Picture 43), then press “OK” button to confirm.



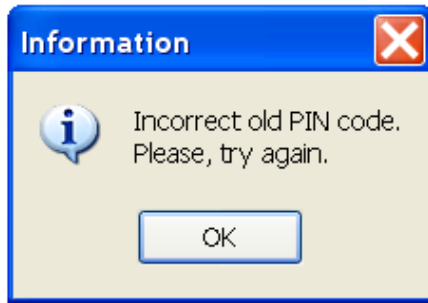
Picture 43

4) To confirm PIN-code enter four zeros in the “Enter four digits or 0000 to clear PIN” field (window “Confirm PIN code”) (Picture 44), to confirm press “OK” to finish operation.



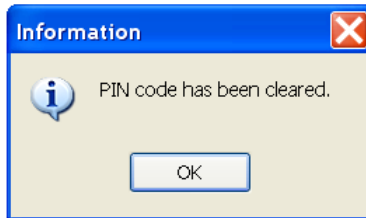
Picture 44

ATTENTION! *In case the previous PIN -code (Picture 42) is noncorrectly entered the program will notice a wrong PIN-code entering (Picture 45). If the previous PIN-code is noncorrectly entered 3 times in a row all the audio files will be deleted from the device memory.*



Picture 45

5) Information window will pop up to confirm clearing of the PIN-code (Picture 46). To continue press “OK”.



Picture 46

2.9 Memory testing

2.9.1 ATTENTION! *Preventing the recorded data erase one should download all the recorded files to the computer hard drive before starting of device memory formatting procedure, otherwise all the data will be erased.*

2.9.2 Select “Format memory” from the “Settings” tab from the main menu to test the device memory. The window with warning about the data loss will appear (Picture 47).

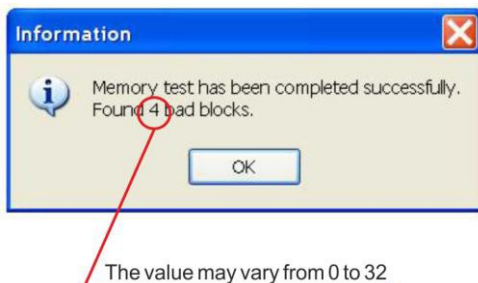


Picture 47

Press “Yes” button to confirm or “Cancel” to cancel.

After memory testing (Picture 48) information window about faulty sectors of built-in memory will appear. Number of faulty sectors may vary from 0 to 32.

ATTENTION! *This information is significant for manufacturer only. Faulty sectors won't affect the quality of the device performance.*



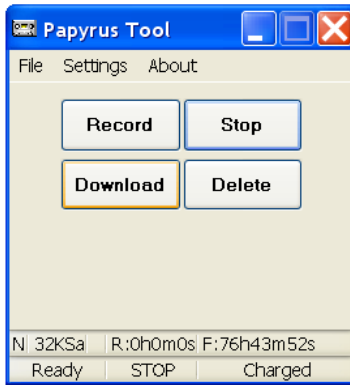
Picture 48

2.10 Downloading and playback of audio files

2.10.1 In order to download audio files from the device to the PC:

- 1) Connect the device to the computer (see part 2.3).
- 2) Launch the “Papyrus Tool” software and press the “Download”

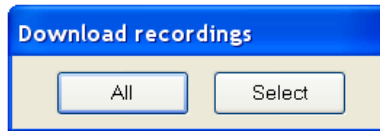
button in the main window (Picture 49).



Picture 49

3) The “Download recordings” window will appear on screen (Picture 50).

The “All” button is for all information (all files) downloading, the “Select” button is for downloading of files selected by the user.



Picture 50

4) Pressing the “All” button will launch the “Select Folder to Save” window, where folder for saving files can be selected (Picture 51).

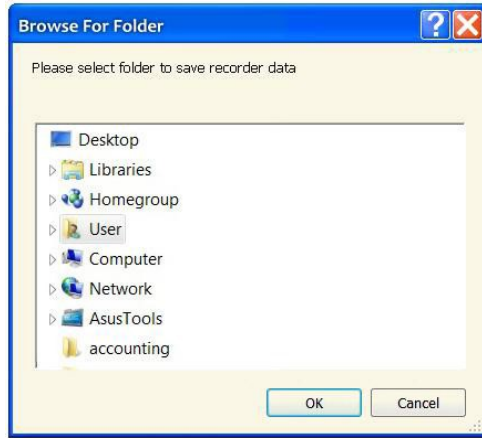


Picture 51

5) It is possible to save files either in the default folder located at the address: C:\Username\Documents\Papyrus (“Username” is the name

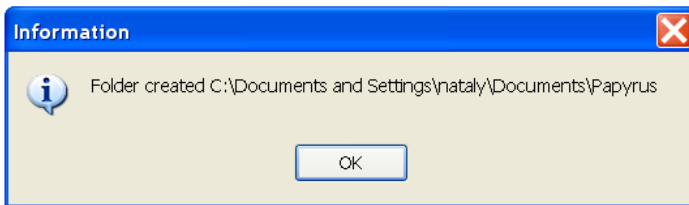
of particular user of the PC) or in any other folder:

- press “OK” button to save files in the default folder;
- press “Browse” to save files in the existing folder, select the desired folder in the appeared window and press button “OK” (Picture 52);



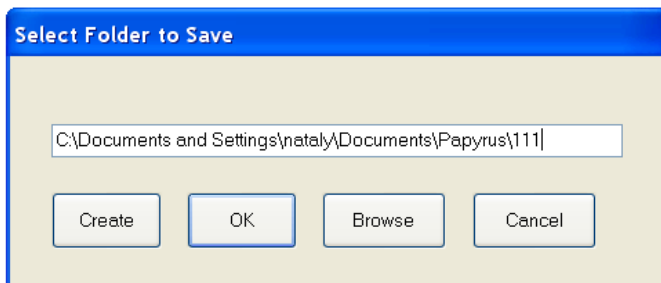
Picture 52 – “Folder selection” window

- press “Create” to make a new folder for saving files in. Information window will pop up (Picture 53). To confirm creation of the folder press “OK”.



Picture 53

After confirmation window “Select Folder to Save” (Picture 54) with folder address will appear. To save files in the new folder press “OK”.



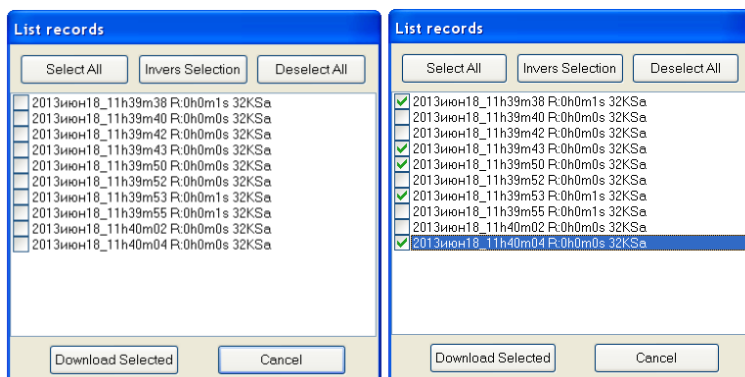
Picture 54

6) Press “Select” button on the “Download recordings” window to download selected files (Picture 50).

7) After scanning, the "Records list" window displaying list of recordings will appear and the required files can be selected by putting ticks in the boxes beside them (Picture 55).

8) Press “Deselect All” button to cancel selection of all selected files.

9) To exclude some files from downloading, select them and press “Inverse Selection” button – unnecessary files will be excluded from the list.



Picture 55

10) Press “ Download Selected ” button.

11) Select the folder to download files (see part 2.10.1, point 4).

12) If the recorder is protected with PIN-code (see part 2.8), it is necessary to enter PIN-code before downloading the information.

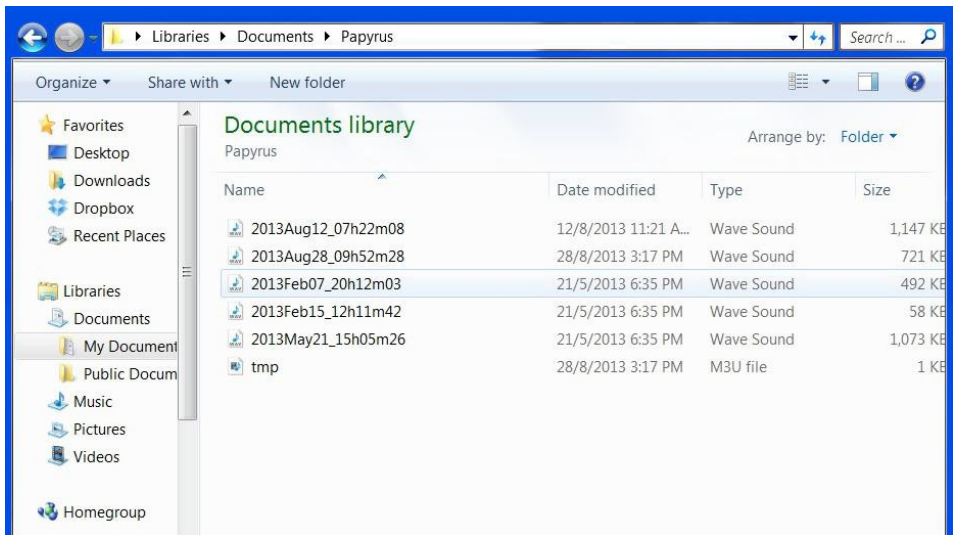
ATTENTION! *If a wrong PIN-code is entered three times, all audio files will be automatically deleted from the device memory.*

2.10.2 Choose tab "File" of the main menu and select tab "Play" (Picture 56) for listening to the downloaded files. The default application for playing files is Nullsoft company's “WinAmp” player distributed for free.

Also "Papyrus Tool" program establishes files within indicated folder according to the start time of each record (Picture 57) . One can listen to these files by use of any Windows media application.



Picture 56

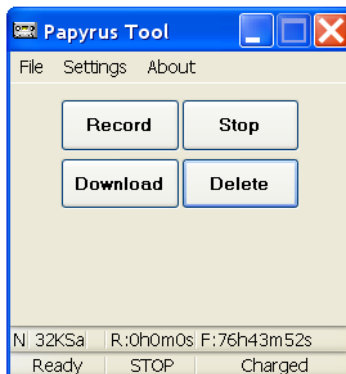


Picture 57 – “Papyrus” folder

2.11 Recorded data deleting

2.11.1 To delete recorded audio files from the device, it is necessary to:

- 1) Connect the device to the PC (see part 2.3).
- 2) Run “Papyrus Tool” program according to part 2.4.
- 3) Press “Delete” button in the window of the “Papyrus Tool” program (Picture 58) to delete all files from the memory of the device.

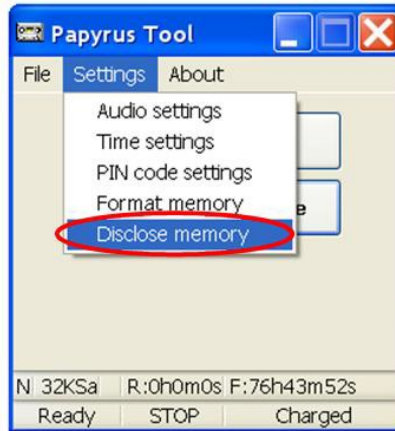


Picture 58

2.12 Restore of deleted data

2.12.1 To restore the deleted data, select “Settings” tab from the main menu and press “Disclose memory” (Picture 59). Recorded data will become available for downloading to PC.

ATTENTION! *If the “Destroy memory” option was activated during set up of the PIN-code (see part 2.9.2 point 2) and the data was deleted because PIN-code was keyed in incorrectly, the data cannot be restored.*

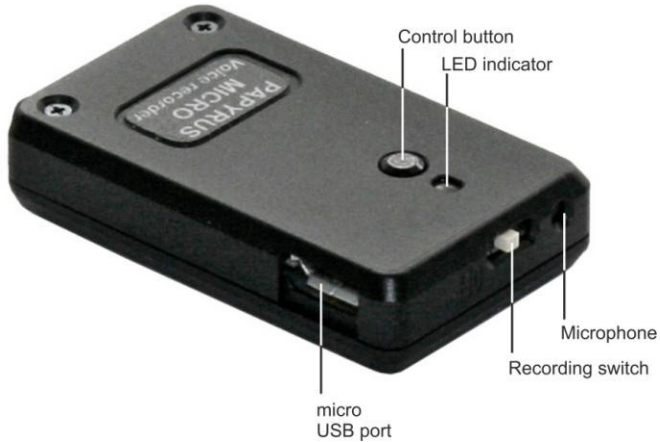


Picture 59

2.13 Using the device

2.13.1 The control button and the LED indicator (Picture 60) are used to control the device when it is not connected to the PC.

The signals of the LED indicator during various operation modes of the device are listed in Table 5.



Picture 60

Table 5

The device mode	LED indicator signal and color	
The device is not connected to computer/charger	<i>When the control button is pressed (Pic. 60)</i>	
	Blinking: recording is in progress	Shining: recording is stopped
	Green color: Battery is 100% full	Red color: Battery is 25% or less level
The device is connected to computer/charger	<i>When the control button is not pressed (Pic. 60)</i>	
	Blinking: recording is in progress	Shining: recording is stopped
	Green color: Battery is 100% full	Red color: Battery is being charged from USB port

2.13.2 To start the recording, move the recording switch towards the microphone. To stop the recording, move the recording switch away from the microphone. The location of the recording switch and the microphone are shown on Picture 60.

3 TROUBLESHOOTING

3.1 The list of possible malfunctions of the device, their reasons and possible way to remove them are given in Table 6. Please contact the manufacturer if the problem cannot be resolved.

Table 6

Malfunction	Possible reason	Way to remove
The LED indicator is shining continuously when the recording is started	The LED indicator is shining in red color – battery is empty	Charge the battery (see part 2.1)
	In the “Record Normal” mode the memory of the voice recorder is full	Empty the device memory (see part 2.11)
	In the voice activated recording mode, the level of signal is lower than the recording threshold	Change the settings of the Voice Activation System “VOX” (see part 2.6)

3.2 The current consumption in the standby mode (see Table 1) must be considered when the voice activated recording function “VOX” (see part 2.7) is used. An example of estimation of the operation time of the device in the voice activated recording mode is given below:

Standby time of voice activated recording: 1000 hours;

*Current consumption in standby voice activated recording mode:
350 μ A;*

Capacity of fully charged battery: 1320 mA·h;

Current consumption in recording mode: 6 mA;

Maximum recording time with fully charged battery: 160 hours;

*Remaining recording time after the voice activation: $(1320 - (1000 * 0,35)) / 6 = 161$ hours.*

4 TECHNICAL SERVICE

4.1 The presence of all required parts of the device and their condition must be checked carefully to ensure the device is fully functional before the intended use.

4.2 The battery must be charged periodically. The battery must be charged once every six months, regardless of the usage frequency of the device.

4.3 It is recommended to charge battery before use, if the device was not in use for a long period of time.

ATTENTION! *It is forbidden to use expired batteries.*

5 STORAGE AND MAINTENANCE

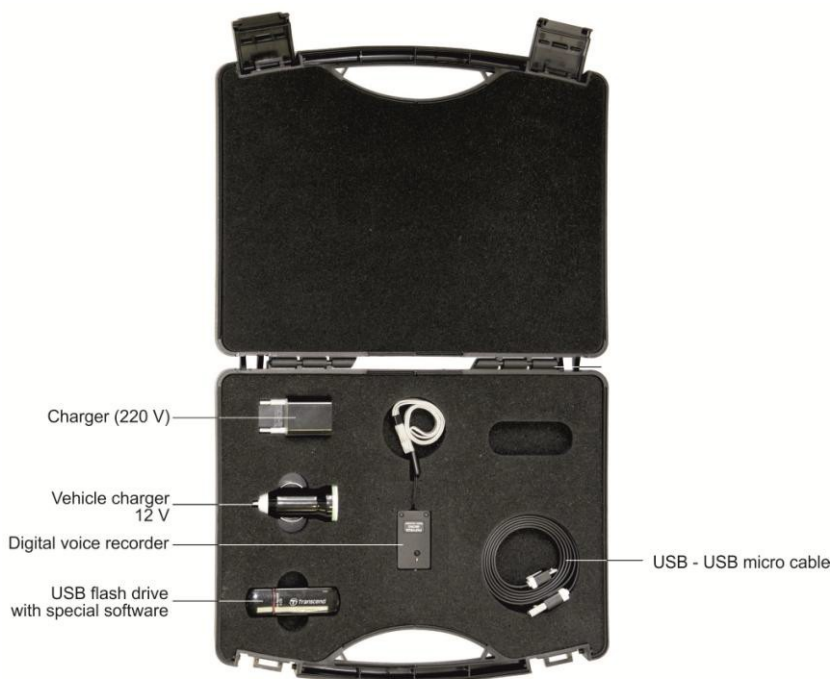
5.1 The device must be stored in the environment protected from the influence of atmospheric precipitation, in the absence of corrosive and other damaging fumes.

5.2 Store the device in dry room in the temperatures between +15 °C and +35°C.

5.3 If the device was stored at temperatures out of the working range, it must be kept for at least 30 minutes in the temperatures from 0°C to +40°C before it can be used.

5.4 Do not store the device with empty battery.

5.5 The device must be stored in the closed case provided by the manufacturer. The arrangement of the device and components inside the case is shown on Picture 61.



Picture 61 – Case with compartments containing the voice recorder and other components

6 TRANSPORTATION REGULATIONS

6.1 Avoid overheating (over 60°C) and overcooling (under -30°C) the device.

6.2 Transport the device in the casing that protects form mechanical damage and moisture. The device can be transported by any means of transportation (by air in the airtight compartment).

6.3 Avoid falls and other impacts that may lead to mechanical damages during transportation.

7 UTILIZATION

7.1 The service time of the device is 5 years. The use of the device must be terminated beyond the service time.

7.2 Utilize the device according to the user-company rules.

7.3 In case the device was sent to the manufacturer for repair and was deemed unfit for repair, the manufacturer will recommend in writing utilizing the device.

7.4 Utilize the used batteries according to the local environmental rules.

ATTENTION! Improper utilization of batteries may lead to environmental pollution.

ATTENTION! Utilization of batteries in the fire may lead to burns and explosion.

8 PRODUCT LIFETIME AND MANUFACTURER'S WARRANTY

8.1 The lifetime of the device is 5 years.

8.2 Manufacturer guarantees the functionality of the device and compliance to the technical specifications during 12 month from the date of sale, the user has to follow the usage regulations. Warranty repair is free of charge.

8.3 Manufacturer is not responsible (including the warranty period) for malfunctions resulted from not following the user manual instructions.

8.4 The warranty repair is void for devices with mechanical damages, signs of external impacts or out of order due to users not following use regulations given by manufacturer. The repair of such devices may be arranged with manufacturer, and the cost of repair is born by user.

8.5 The warranty does not extend to the batteries.